

Creating the Maya World

Chichen Itza ~ Where it all began



Chichen Itza: Year 2000

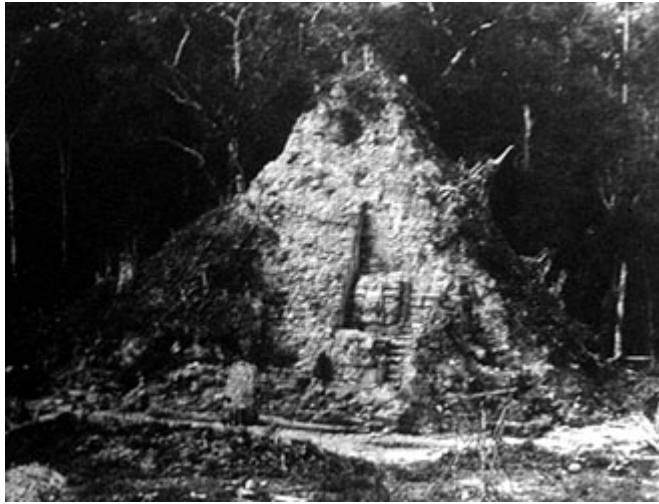


Chichen Itza: Year 1920

Chichen Itza: Year 1840



The Archaeological Tradition of Clearing and Exposing...



Tikal in the year 1934



Uaxactun in the year 1904

Following Archaeological Traditions



1987

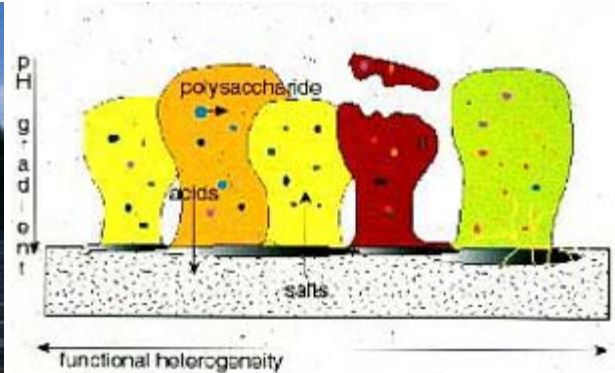


1995

The same soil processes that make the Maya forest fertile are those that break down the exposed temple walls



2002



Biofilms on Stone

Seeking a new balance in the 21st century

Examples from Tikal

